



CRANE



CLEFT REGISTRY & AUDIT NETWORK

[Contact Us](#)

[Subscribe / Unsubscribe](#)

CRANE Database eNewsletter

Annual Report Highlights

Issue 2018 (1)
12 January 2018

Thank you very much for your submissions and contributions to the 2017 Annual Report.

This can now be found in the [Publications](#) section of the [CRANE Database Website](#).

Data collection cut off dates for 2018 analyses

- ◆ Summer 2018 Audit Day Reports: **Thursday 3 May 2018.**
- ◆ 2018 Annual Report: **Friday 29 June 2018.**



CRANE aims to audit, evaluate and report on the delivery of cleft services to children in England, Wales and Northern Ireland with the congenital abnormality of cleft lip and/or palate

17,840 children registered over the last seventeen years

Approximately 1050 new cases are registered in CRANE per year

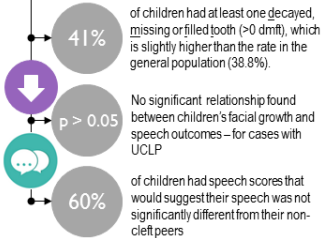
2016 births

28.2% of children with a Cleft palate (CP) received a delayed diagnosis (after birth)

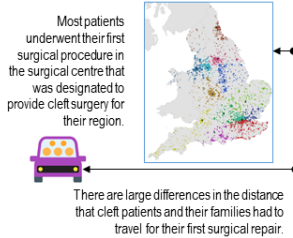


Key Findings

5-year olds



All children treated in England



2018 Annual Report: Reporting Psychology outcomes at 5 years for 2011 births



Entry of data for the additional outcomes collected at 5 and 10 years of age (since May 2016) is underway - specifically for Psychology at 5 years of age and Paediatric Dentistry at 10 years of age.

- ◆ We aim to report on Psychology at 5 years for 2011 births in the 2018 Annual Report. **Please ensure that all relevant members of your cleft team are aware of this.**

Recommendations

Clinical care

- Late diagnosis of cleft palate (CP) remains an important issue that must be addressed
- Increased preventative dental support for children with a cleft seems essential to reduce dental decay, particularly among those at greatest risk of caries

Outcome measures and reporting to CRANE

- Units' data submission to CRANE must improve, to allow the expansion of analyses and reporting of cleft outcomes
- Further work is required to explore the educational differences previously highlighted by our reports

Publications and future directions

Kate J Fitzsimons, Lynn P Copley, Efrosini Setakis, Susan C Charman, Scott A Deacon, Lorraine Dearden, Jan H van der Meulen. Early academic achievement in children with isolated clefts: a population-based study in England. Archives of Disease in Childhood. **Published Online First: 02 November 2017.** doi: 10.1136/archdischild-2017-313777



Plan for 2018

Start work with our stakeholders to agree further outcomes for older children and young adults

Patients and Parents / Carers version of the CRANE 2017 Annual Report

A *Summary of Findings for Patients and Parents/Carers* – in a similar format to the one we published in November 2015 – based on the 2017 Annual Report will be produced in collaboration with [CLAPA](#), edited by the [Plain English Campaign](#), and published in early 2018.

